

CAB456RF: SMA S/T MALE PLUG + S/S SMA FEMALE STRAIGHT BULKHEAD JACK W/O-RING RATED TO IP68/69K + RG178 CABLE

SPECIFICATIONS :

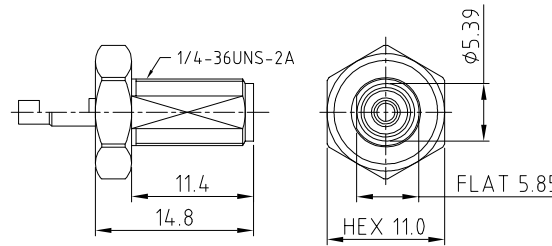
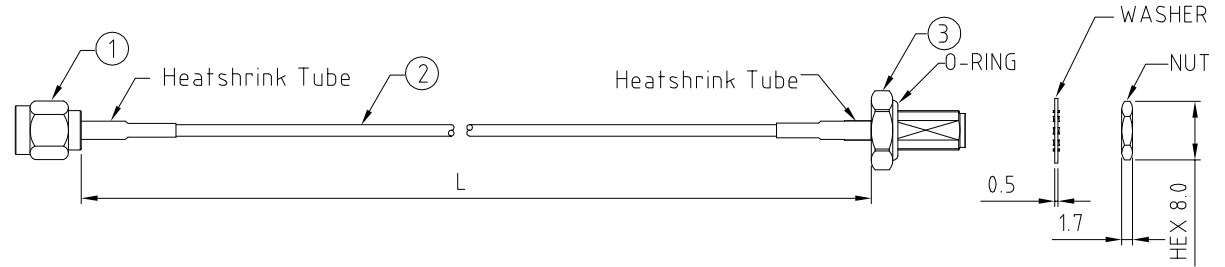
1. SMA STRAIGHT PLUG, GOLD PLATED, P/N: RFCT-SMA022-M78.
2. COAXIAL CABLE, SEE P/N OPTIONS FOR DETAIL.
3. SMA STRAIGHT BULKHEAD JACK W/O-RING, W/SUS303 STAINLESS STEEL BODY, TESTED TO IP68/69K, P/N: RFCT-SMA061-F78 (WITH SILICON O-RING) OR RFCT-SMA061-F78-1 (WITH EPDM O-RING).

ENVIRONMENTAL:

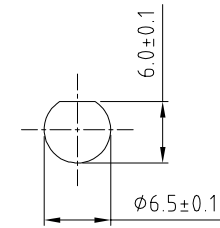
- A. BULKHEAD MOUNTED CONNECTOR (RFCT-SMA061-F78) TESTED TO THE FOLLOWING SPECIFICATION:
- i. IP6X - DUST TIGHT - NO PARTICLE INGRESS.
 - ii. IPX8 WATERPROOF FOR 48 HOURS AT 1 METER UNDERWATER.
 - iii. IPX9K WATER SPRAY, 14-16L PER MINUTE, AT 8,000-10,000 KPA, AT 100-150MM DISTANCE FOR 30 SECONDS.

NOTES:

1. WORKING FREQUENCY RANGE: DC-3GHz.
2. OPERATING TEMPERATURE: -40°C TO +125°C
3. IMPEDANCE: 50 OHM
4. IF THE CONNECTOR IS USED IN A CORROSIVE ENVIRONMENT, WE RECOMMEND THE CONNECTOR FACE IS PROTECTED WITH A STAINLESS STEEL DUST CAP.
5. PLEASE USE THE RECOMMENDED TORQUE FORCES FOR STAINLESS STEEL CONNECTORS. THIS IS PUBLISHED ON GRADCONN.COM RESOURCES PAGE.



SMA JACK DETAIL DRAWING



RECOMMENDED SMA MOUNTING HOLE

HOW TO ORDER

CAB456RF - X X X X - X - 1 - X

"L" LENGTH IN MM:

- eg: 100MM = 0100
 (MIN. 0050-MAX.2000
 STANDARD = 0100, 0150, 0200)
 Tolerance: 50mm: ±2mm.
 51-200mm: ±5mm.
 201-500mm: ±7mm.
 >501mm: ±10mm.

CABLE SIZE:

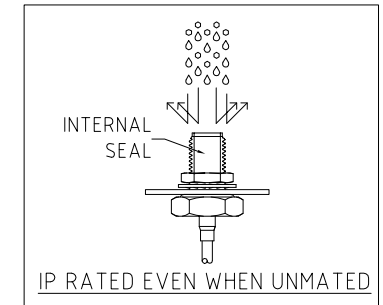
1 = RG178 CABLE, COLOR: BROWN.

O-RING MATERIAL OPTIONS:

- S = SILICON, RED
 E = EPDM, BLACK (STANDARD)

WASHER AND NUT OPTIONS:

- BLANK = SEPARATELY PACKED (STANDARD)
 A = ALL ASSEMBLED WITH CONNECTOR



REV. DATE & DRN
10 09/03/21 - NYW RELEASE
11 11/03/21 - NYW ADD NBR O-RING OPTION
12 27/04/21 - NYW ADD NOTE 4
13 05/07/21 - NYW ADD NOTE 4, 5, 6, 7, 8, 9, 10, 11, 12, 13, 14, 15, 16, 17, 18, 19, 20, 21, 22, 23, 24, 25, 26, 27, 28, 29, 30, 31, 32, 33, 34, 35, 36, 37, 38, 39, 40, 41, 42, 43, 44, 45, 46, 47, 48, 49, 50, 51, 52, 53, 54, 55, 56, 57, 58, 59, 60, 61, 62, 63, 64, 65, 66, 67, 68, 69, 70, 71, 72, 73, 74, 75, 76, 77, 78, 79, 80, 81, 82, 83, 84, 85, 86, 87, 88, 89, 90, 91, 92, 93, 94, 95, 96, 97, 98, 99, 100
15 28/01/24 - CC ADD IP RATING VIEW
16 29/02/24 - NYW REMOVE NBR O-RING OPTION

Scale: NTS	THIRD ANGLE	Unstated Tolerances:
Drawn: NYW		.X ±0.2 .XX ±0.2 .XXX ±0.2 ANGLES N/A
App'd: XXX	Title CABLE ASSEMBLY	
Date: 29 FEB. '24	Revision: 1.6	Unit: mm

NAUTILUS
 IP Rated RF Products

GRADCONN
 www.gradconn.com

Drawing Number: CAB456RF	
Sheet 1	of 1
Drawing	E and O E