

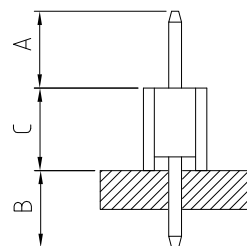
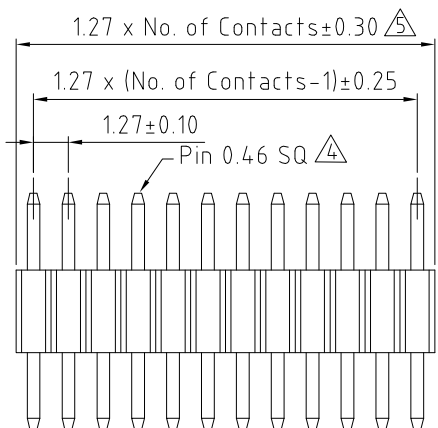
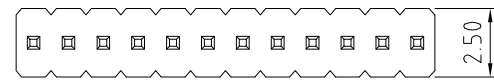
BB02-BL :- 1.27mm (0.05") PIN HEADER, SINGLE ROW, STRAIGHT, THROUGH HOLE - 02 TO 50 CONTACTS

SPECIFICATIONS

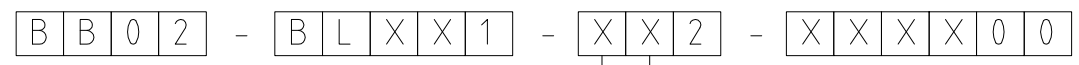
CURRENT RATING 1 AMP
 INSULATOR RESISTANCE 1000 MEGOHMS MIN.
 DIELECTRIC WITHSTANDING AC 300 V
 OPERATING TEMPERATURE -40°C TO +105°C
 CONTACT MATERIAL BRASS
 INSULATOR MATERIAL THERMO PLASTIC, UL 94V-0
 STANDARD : LCP Δ
 PLATING GOLD, TIN, OR SELECTIVE OVER 30~50U" NICKEL
 SOLDERABILITY IR REFLOW: 280°C FOR 10 SEC
 WAVE: 250°C FOR 5-10 SEC
 MANUAL SOLDER: 380°C FOR 3-5 SEC

PACKED IN BOX Δ Δ

MATES WITH: - BB02-CE BB02-NP
 BB02-CF
 BB02-NU



HOW TO ORDER



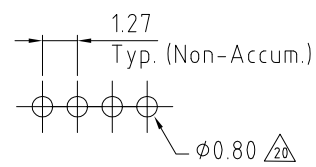
NO. OF CONTACTS: Δ 02 TO 50

CONTACT PLATING OPTIONS:
 K = GOLD FLASH (STANDARD)
 A = 10U" GOLD ON CONTACT/GOLD FLASH ON TAIL
 B = 15U" GOLD ON CONTACT/GOLD FLASH ON TAIL
 C = 30U" GOLD ON CONTACT/GOLD FLASH ON TAIL
 T = BRIGHT TIN
 M = MATT TIN
 D = GOLD FLASH ON CONTACT/BRIGHT TIN ON TAIL
 E = 10U" GOLD ON CONTACT/BRIGHT TIN ON TAIL
 F = 15U" GOLD ON CONTACT/BRIGHT TIN ON TAIL
 G = 30U" GOLD ON CONTACT/BRIGHT TIN ON TAIL

HEIGHT 'C':
 A = 2.54mm
 B = 3.0mm
 C = 1.7mm Δ
 D = 1.4mm

DIMENSION A (1/10mm)
 28 TO SUIT BB02-CF
 40 TO SUIT BB02-CE
 PLEASE SPECIFY PIN LENGTH REQUIRED
 I.E. 2.5mm = 25
 TOL = ±0.25mm

DIMENSION B (1/10mm)
 PLEASE SPECIFY PIN LENGTH REQUIRED
 I.E. 2.5mm = 25
 STANDARD = 26
 TOL = ±0.25mm



RECOMMENDED PC BOARD HOLE LAYOUT (TOLERANCE: ±0.05)

REV.	DATE & DRN
11	28/07/04 - AMCI RELEASE
12	10/07/05 - NYW
13	12/08/05 - CHC
14	19/09/05 - NYW
15	02/10/05 - NYW
16	17/07/06 - NYW
17	20/02/08 - NYW
18	30/12/08 - CHC
19	02/10/09 - NYW
20	09/03/11 - NYW
21	05/08/13 - NYW
22	22/08/13 - NYW
23	06/02/18 - NYW

11	28/07/04 - AMCI RELEASE
12	10/07/05 - NYW
13	12/08/05 - CHC
14	19/09/05 - NYW
15	02/10/05 - NYW
16	17/07/06 - NYW
17	20/02/08 - NYW
18	30/12/08 - CHC
19	02/10/09 - NYW
20	09/03/11 - NYW
21	05/08/13 - NYW
22	22/08/13 - NYW
23	06/02/18 - NYW

Scale:	5:1
Drawn:	AMCI
App'd:	XXX
Date:	6 FEB. '18

THIRD ANGLE	
Title	PIN HEADER
Revision:	2.3

Unstated Tolerances:	X ± 0.30 X ± 0.25 XX ± 0.15 XXX ± 0.10
Material	SEE NOTE
Unit	mm

Material	SEE NOTE
NOT TO SCALE	

Type:	BB02-BL
Drawing Number:	BB02-BL
Sheet 1 of 1	
Drawing	E and O E