

BB02-KY :-2.54mm X 2.54mm (0.1" X 0.1") SOCKET, STRAIGHT, SMD, DUAL ROW - 04 to 80 CONTACTS, DUAL ENTRY

SPECIFICATIONS

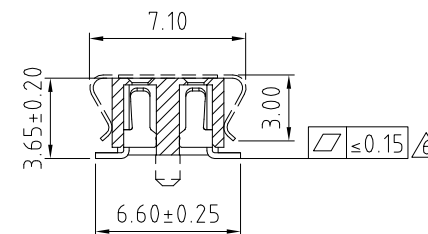
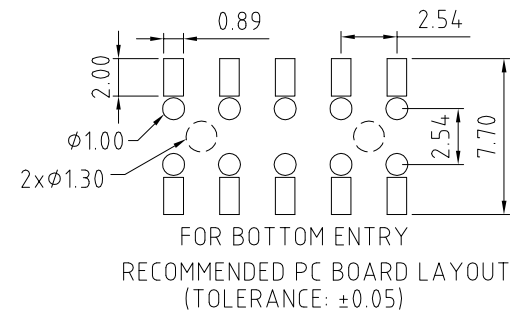
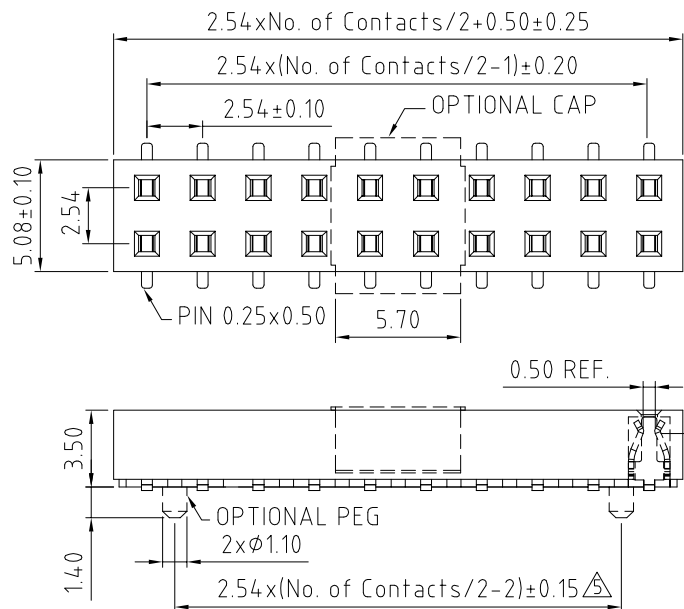
CURRENT RATING	3 AMP
INSULATOR RESISTANCE	1000 MEGOHMS MIN.
CONTACT RESISTANCE	20m ohms MAX.
DIELECTRIC WITHSTANDING	AC 600 V
OPERATING TEMPREATURE	-40°C TO +105°C
CONTACT MATERIAL	PHOSPHOR BRONZE
INSULATOR MATERIAL	THERMOPLASTIC, UL 94V-0
	STANDARD: LCP+30%G.F.
PLATING	GOLD, TIN OR SELECTIVE OVER 30~50U" NICKEL
SOLDERABILITY	IR REFLOW: 280°C FOR 10 SEC
	WAVE: 250°C FOR 5-10 SEC
	MANUAL SOLDER: 380°C FOR 3-5 SEC

NOTES:

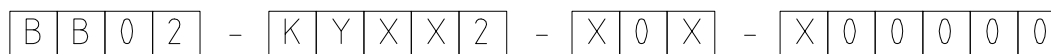
1. RECOMMENDED MATING PIN LENGTH FOR TOP ENTRY: 2.0MM.
2. PARTS WITH SMALLER CONTACT NUMBERS MAY BE PACKED IN BOX INSTEAD OF IN TUBE.
3. MAX. NUMBER OF CONTACTS ALLOWED FOR TAPE & REEL PACKAGING: 64 CONTACTS.

MATES WITH:

BB02-HE	BB02-HQ	BB02-TF
BB02-HF	BB02-HR	BB02-TG
BB02-HJ	BB02-HU	BB02-TH
BB02-HP	BB02-TD	



HOW TO ORDER

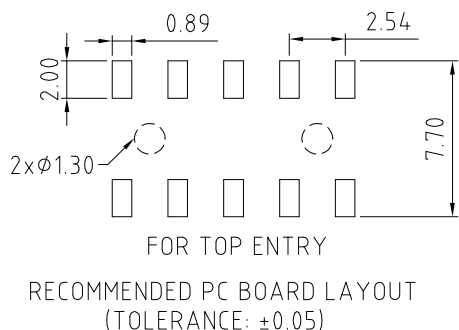


NO. OF CONTACTS:
04 TO 80

CONTACT PLATING OPTIONS:
 K = GOLD FLASH (STANDARD)
 A = 10U" GOLD ON CONTACT/GOLD FLASH ON TAIL
 B = 15U" GOLD ON CONTACT/GOLD FLASH ON TAIL
 C = 30U" GOLD ON CONTACT/GOLD FLASH ON TAIL
 T = BRIGHT TIN
 M = MATT TIN
 D = GOLD FLASH ON CONTACT/BRIGHT TIN ON TAIL
 E = 10U" GOLD ON CONTACT/BRIGHT TIN ON TAIL
 F = 15U" GOLD ON CONTACT/BRIGHT TIN ON TAIL
 G = 30U" GOLD ON CONTACT/BRIGHT TIN ON TAIL

PACKAGING OPTIONS:
 3 = TUBE (standard)
 4 = TUBE + FILM
 5 = TUBE + CAP
 6 = TAPE & REEL
 7 = TAPE & REEL + FILM
 8 = TAPE & REEL + CAP
 (see notes 2 & 3)

LOCATING PEG OPTIONS:
 A = WITH PEG
 B = WITHOUT PEG



REV.	DATE	BY	DESCRIPTION
10	16/07/05	NYW	RELEASE
11	30/10/05	NYW	AMEND DRAWING OPTION 4, 7.
12	30/05/07	NYW	ADD LOCATING PEG DISTANCE
13	30/05/07	NYW	ADD NOTES 1
14	30/02/08	CHC	AMEND INSULATOR MATERIAL
15	28/05/08	PN	ADD MATT TIN PLATING
16	17/09/08	NYW	ADD COPLANARITY SPEC.
17	09/10/08	NYW	ADD LOCATING PEG DISTANCE
18	20/02/09	CHC	AMEND COPLANARITY SPEC.
19	20/02/09	CHC	DRAWING MODIFICATION.
20	02/03/11	NYW	AMEND INSULATOR MATERIAL
21	24/10/13	NYW	ADD PACK OPTIONS 4, 7.
22	29/11/21	NYW	ADD NOTES 2 & 3.
23	29/11/21	NYW	AMEND PEG LAYOUT.

Scale:	4:1	THIRD ANGLE	Unstated Tolerances: X ± 0.30 X ± 0.25 XX ± 0.15 XXX ± 0.10	Material	SEE NOTE
Drawn:	CHC				
App'd:	XXXX	Title	SOCKET		NOT TO SCALE
Date:	29 NOV. '21	Revision:	2.0	Unit:	mm

www.gradconn.com

THIS DRAWING IS CONFIDENTIAL AND MUST NOT BE COPIED OR DISCLOSED WITHOUT WRITTEN CONSENT

Type:	BB02-KY
Drawing Number:	BB02-KY
Sheet	1 of 1
Drawing	© E and OE