

CH03-BH060-A : SIM CARD HOLDER SMT 6 CONTACTS WITH SWITCH

FEATURES

1. GENERAL CHARACTERISTICS

DIMENSIONS: 29.70L x 17.20W x 2.50H mm
 OPERATING POSITION: SHAFT UP / DOWN / HORIZONTAL
 MOUNTING SYSTEM: SMT TYPE
 DURABILITY: 5,000 CYCLES
 OPERATION TEMPERATURE: -25°C TO +85°C

2. MECHANICAL CHARACTERISTICS

INSULATION MATERIAL: THERMOPLASTIC, UL 94V-0
 CONTACT MATERIAL: PHOSPHOR BRONZE
 CONTACT PLATING: GOLD ON CONTACT AREA, TIN ON SOLDER TAIL

3. ELECTRICAL CHARACTERISTICS

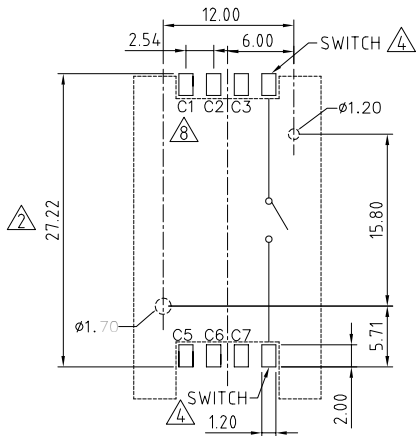
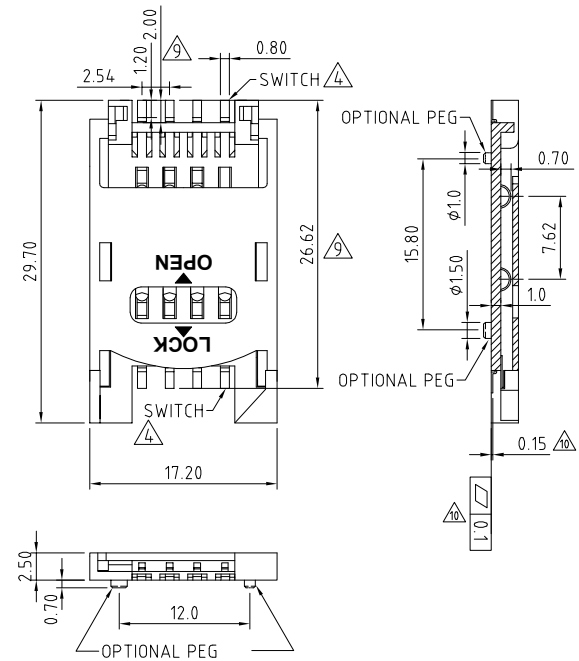
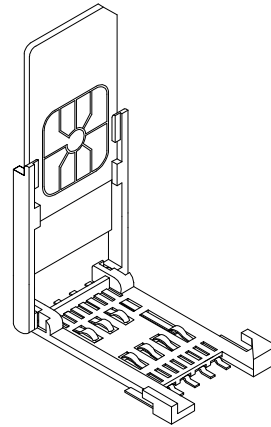
CONTACT RESISTANCE: 30M OHMS MAX.
 INSULATION RESISTANCE: > 1000M OHMS MIN. / 500V DC
 RATED CURRENT: 0.5A MAX.
 RATED VOLTAGE: 30V AC
 WITHSTANDING DIELECTRIC VOLTAGE: 500V AC R.M.S. FOR 1 MINUTE

4. SOLDERABILITY

MAX. PROCESSING TEMP.: 260°C FOR 10 SEC.

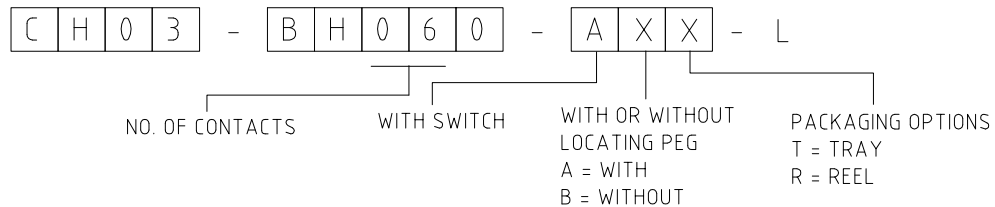
NOTES:

1. ACCEPTABLE SIM CARD SIZE SHOULD MEET GSM 11.11 SPECIFICATION REQUIREMENT $\triangle 6$



RECOMMENDED PCB LAYOUT

HOW TO ORDER



10	07/07/03 - NYW	RELEASE
11	10/11/04 - NYW	DRAWING MODIFICATION
12	01/02/04 - NYW	ADD ELECTRICAL SPEC.
13	27/03/06 - NYW	ADD DIMENSIONS
14	30/06/06 - NYW	ADD SWITCH INDICATION
15	14/07/06 - NYW	REMOVE NON-ROHS VERSION
16	29/05/07 - NYW	ADD NOTES 1
17	14/06/08 - NYW	ADD ELECTRICAL SPEC.
18	30/06/08 - CHC	DESIGNATE PIN 1
19	18/03/09 - CHC	ADD DIMENSIONS
20	28/04/09 - CHC	ADD PACKAGING DRAWING
21	07/06/23 - NYW	ADD DIMENSIONS

Scale: 2:1	THIRD ANGLE	Unstated X X XX Angle	Tolerances: N/A ±0.38 ±0.25 ±1°	Material: SEE NOTE
Drawn: NYW				
App'd: XXXX	Title: SIM CARD ACCEPTOR			NOT TO SCALE
Date: 7 JUN. '23	Revision: 2.1			Unit: mm

GRADCONN

www.gradconn.com

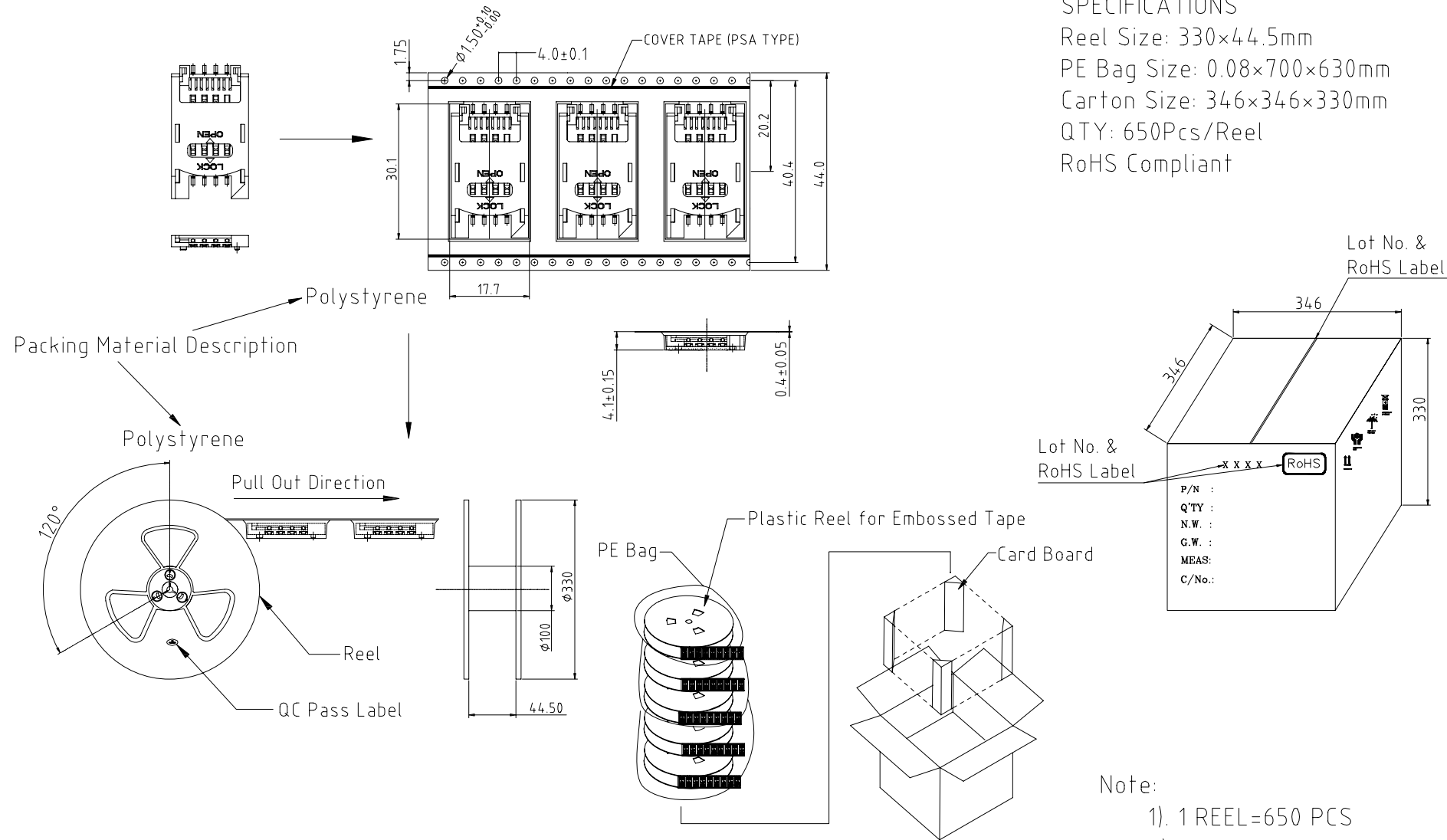
THIS DRAWING IS CONFIDENTIAL AND MUST NOT BE COPIED OR DISCLOSED WITHOUT WRITTEN CONSENT

Type: CH03-BH
CH03-BH060-A
Drawing Number:
Sheet 1 of 1
Drawing C E and O E

CH03-BH0X0-XXR-L - REEL PACKAGING DRAWING

SPECIFICATIONS

Reel Size: 330x44.5mm
 PE Bag Size: 0.08x700x630mm
 Carton Size: 346x346x330mm
 QTY: 650Pcs/Reel
 RoHS Compliant



- Note:
- 1) 1 REEL=650 PCS
 - 2) 1 BOX=6 REEL

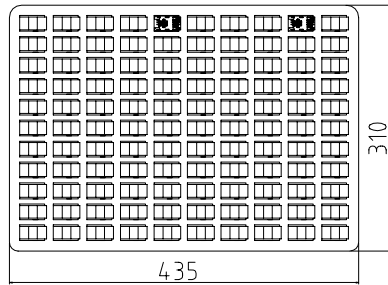
REV. DATE & DRN 10 03/02/09 - CHC PACKAGING DRAWING ADDED	Drawn: CHC	THIRD ANGLE	Unstated .X ±0.20 .XX ±0.10	Material SEE NOTE
	App'd: XXX	Title: PACKAGING	ANGLES ±1°	NOT TO SCALE
	Date: 03 FEB '09	Revision: 1.0		Unit: mm

 www.gradconn.com		Type: CH03-BH
		CH03-BH0X0-XXR-L
THIS DRAWING IS CONFIDENTIAL AND MUST NOT BE COPIED OR DISCLOSED WITHOUT WRITTEN CONSENT		Drawing Number:
		Sheet 2 of 3
		Drawing © E and O E

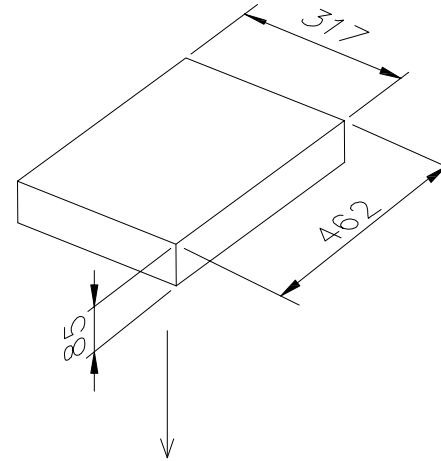
CH03-BH0X0-XXT-L - TRAY PACKAGING DRAWING

PACKING CONDITION

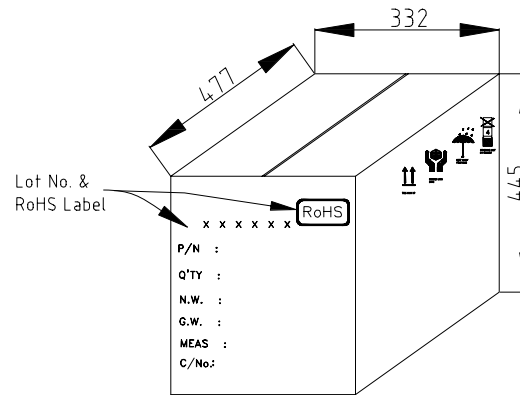
TRAY×10 (110PCS/TRAY)



INNER BOX×5 (1100PCS/BOX)



OUTER BOX×1 (5500PCS)



Q'TY/PCS		
OUTER BOX	INNER BOX	TRAY
5500	1100	110

REV. DATE & DRN
1.0 03/02/09 - CHC
PACKAGING DRAWING ADDED

	THIRD ANGLE	Unstated Tolerances: .X ±0.20 .XX ±0.10	Material SEE NOTE
Drawn: CHC		ANGLES ±1°	NOT TO SCALE
App'd: XXX	Title: PACKAGING		Unit: mm
Date: 03 FEB '09	Revision: 1.0		

www.gradconn.com

THIS DRAWING IS CONFIDENTIAL AND MUST NOT BE COPIED OR DISCLOSED WITHOUT WRITTEN CONSENT

Type: CH03-BH
CH03-BH0X0-XXT-L
Drawing Number:
Sheet 3 of 3
Drawing © E and O E